

TECHNICAL DATA SHEET

Creapure® - The ultimate creatine

CHARACTERISTICS: Creapure® is a fine, colorless, odorless powder derived from chemical synthesis.

COMPOSITION: Ultrapure creatine monohydrate, produced under patent protected manufacturing process.

Formula	C ₄ H ₉ N ₃ O ₂ · H ₂ O
CAS-No.	6020-87-7
Molecular weight	149.1 g/mol
Status	(Listing refers to creatine anhydrous CAS-No. 57-00-1)
EINECS (EU)	200-306-6
MITI (Japan)	2-3146
ECL (Korea)	KE-24130
TSCA (USA)	listed as dietary supplement

SPECIFICATION:	Creatine Monohydrate	≥ 99.9 %
	Creatinine	≤ 100 mg/kg
	Dicyandiamide	≤ 50 mg/kg
	Dihydrotriazine	≤ 3 mg/kg

REGULAR CONTROL:	<u>Heavy metals</u>	
	Hg	≤ 0.10 mg/kg
	Cd	≤ 0.1 mg/kg
	Pb	≤ 0.1 mg/kg
	As	≤ 0.1 mg/kg

Microbiological data

Total Aerobic Plate Count	≤	1000 cfu / g
Moulds and Yeasts	≤	50 cfu / g
Coliform bacteria	negative	/ g
E. coli	negative	/ g
Staphylococcus aureus	negative	/ g
Salmonella sp.	negative	/ 25 g

Office Germany: AlzChem Trostberg GmbH, Dr. Albert-Frank-Straße 32, 83308 Trostberg, Germany
Phone +49 8621/86-0, Fax +49 8621/86-2911

Office USA: AlzChem LLC, 680 Village Trace, Bldg #20, Marietta, Georgia 30067, USA
Phone +1 770-804-0371, Fax +1 770-804-0375

This information and all technical and other advice are based on AlzChem's present knowledge and experience. However, AlzChem assumes no liability for such information or advice, including the extent to which such information or advice may relate to third party intellectual property rights. AlzChem reserves the right to make any changes to information or advice at any time, without prior or subsequent notice. ALZCHEM DISCLAIMS ALL REPRESENTATIONS AND WARRANTIES, WHETHER EXPRESS OR IMPLIED, AND SHALL HAVE NO LIABILITY FOR, MERCHANTABILITY OF THE PRODUCT OR ITS FITNESS FOR A PARTICULAR PURPOSE (EVEN IF ALZCHEM IS AWARE OF SUCH PURPOSE), OR OTHERWISE. ALZCHEM SHALL NOT BE RESPONSIBLE FOR CONSEQUENTIAL, INDIRECT OR INCIDENTAL DAMAGES (INCLUDING LOSS OF PROFITS) OF ANY KIND. It is the customer's sole responsibility to arrange for inspection and testing of all products by qualified experts. Reference to trade names used by other companies is neither a recommendation nor an endorsement of the corresponding product, and does not imply that similar products could not be used.

Edition: January 2018 (Provided that a new edition is published this data sheet loses its validity)

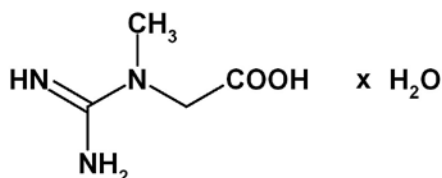
TECHNICAL DATA SHEET

Page 2/2

PROPERTIES:
(physico-chemical)

Consistency: fine powder
Bulk density: app. 690 g/l
Particle size distribution: typically 98 % < 500 µm

**CHEMICAL
STRUCTURE:**



**STORAGE
CONDITIONS:**
(keeping quality)

Creapure® should be stored dry at cool to room temperature.

The shelf life of Creapure® is min. 36 months from the date of manufacture, in the original unopened container, under the suggested storage conditions.

PACKAGING:

Cardboard boxes with inner PE bag containing 25 kg net.

Office Germany: AlzChem Trostberg GmbH, Dr. Albert-Frank-Straße 32, 83308 Trostberg, Germany
Phone +49 8621/86-0, Fax +49 8621/86-2911

Office USA: AlzChem LLC, 680 Village Trace, Bldg #20, Marietta, Georgia 30067, USA
Phone +1 770-804-0371, Fax +1 770-804-0375

This information and all technical and other advice are based on AlzChem's present knowledge and experience. However, AlzChem assumes no liability for such information or advice, including the extent to which such information or advice may relate to third party intellectual property rights. AlzChem reserves the right to make any changes to information or advice at any time, without prior or subsequent notice. ALZCHEM DISCLAIMS ALL REPRESENTATIONS AND WARRANTIES, WHETHER EXPRESS OR IMPLIED, AND SHALL HAVE NO LIABILITY FOR, MERCHANTABILITY OF THE PRODUCT OR ITS FITNESS FOR A PARTICULAR PURPOSE (EVEN IF ALZCHEM IS AWARE OF SUCH PURPOSE), OR OTHERWISE. ALZCHEM SHALL NOT BE RESPONSIBLE FOR CONSEQUENTIAL, INDIRECT OR INCIDENTAL DAMAGES (INCLUDING LOSS OF PROFITS) OF ANY KIND. It is the customer's sole responsibility to arrange for inspection and testing of all products by qualified experts. Reference to trade names used by other companies is neither a recommendation nor an endorsement of the corresponding product, and does not imply that similar products could not be used.

Edition: January 2018 (Provided that a new edition is published this data sheet loses its validity)